



5 Bed Townhouse

65 Highfield
Hatton Park
Warwick
CV35 7TQ


MARGETTS
ESTABLISHED 1806

Price Guide £545,000

65 Highfield
Hatton Park
Warwick
CV35 7TQ



Price Guide £545,000

*** OPEN HOUSE SAT' 6TH SEPTEMBER
2PM - 3.30PM - PLEASE CALL TO BOOK
YOUR SLOT *** Occupying a charming
setting, opposite the green and quietly
located at the end of the cul-de-sac, this
extremely spacious five bedroom
townhouse built by quality builders AC
Lloyd is superbly presented for sale at a
sensible price. The flexible family
accommodation enjoys gardens and
parking with garage and is warmly
recommended by Margetts. The property
benefits from excellent transport links
being within easy access to the
M40/A46 and Warwick Parkway Train
Station and is situated in the catchment
area for good schools.

Canopy porch and double glazed front door opens into

WELCOMING RECEPTION HALL

with radiator, and under stairs storage cupboard.

CLOAKROOM

with low-level WC, wash hand basin, radiator and extractor fan.

DINING ROOM

12'7" max x 8'11" max

with double glazed window and radiator.

OFFICE/STUDY

12'8" x 6'4"

with radiator and double glazed window.

FULL WIDTH KITCHEN

19'6" x 12'1"

In the kitchen area there is extensive work surfacing with one and a quarter bowl single drainer sink with mixer tap and base unit beneath together with eye level wall cupboards above and under unit lighting. Recess suitable for a range style cooker with fitted cooker hood above. Two tall larder cupboards and two radiators.

IN THE DINING AREA

there are double glazed patio doors to the patio and rear garden.

Staircase rises from the reception hall to the first floor landing with radiator.

BUTLERS PANTRY

7'10" x 4'11"

with work surfacing and sink unit having mixer tap and base unit beneath, space suitable for appliance and space and plumbing for washing machine, wall cupboard, extractor fan, and radiator.

MAGNIFICENT FULL WIDTH LOUNGE

19'7" max x 12'8"

with twin double glazed windows affording attractive view to the front, two radiators, fire setting with hearth and surround and inset coal effect gas fire.

BEDROOM ONE - REAR

17'8" ex wards reducing to 11'7" x 12'2"

with twin double glazed windows to the rear and radiators and the dimensions exclude two double door built-in wardrobes with hanging rail and shelf.

ENSUITE SHOWER ROOM

with fully tiled shower cubicle with adjustable shower, low-level WC, wash handbasin, shaver point, extractor fan and radiator.

Staircase from the first floor landing proceeds to the second floor landing with access to the roof space. Off the landing there is an airing cupboard with slatted wood shelving and insulated hot water cylinder.



BEDROOM TWO - FRONT

12'10" max under eaves x 10'4" max
with radiator and double glazed window affording attractive views.

BEDROOM THREE - FRONT

12'8" max under eaves x 8'11" max
with radiator and double glazed window affording attractive distant views.

BEDROOM FOUR - REAR

12'0" x 8'11" max under eaves
with double glazed window and radiator.

BEDROOM FIVE - REAR

12'2" max under eaves x 7'3"
with double glazed window and radiator.

OUTSIDE

The property is located at the head of a cul-de-sac setting with a private block paved drive giving access to the 4 properties.





PARKING

Allocated off-road car parking space leads to the

FRONT GARDEN

front door with fore garden laid to shrubs.

REAR GARDEN

enjoys a large paved patio area and shaped lawn beyond with path, perimeter borders stocked with shrubs and plants and gate giving access to the driveway.

Driveway provides parking and gives access to the

SINGLE GARAGE (with eaves area).

with up and over door, electric light, power and personal door back into the rear garden.

GENERAL INFORMATION

The property is freehold and all mains services are connected.



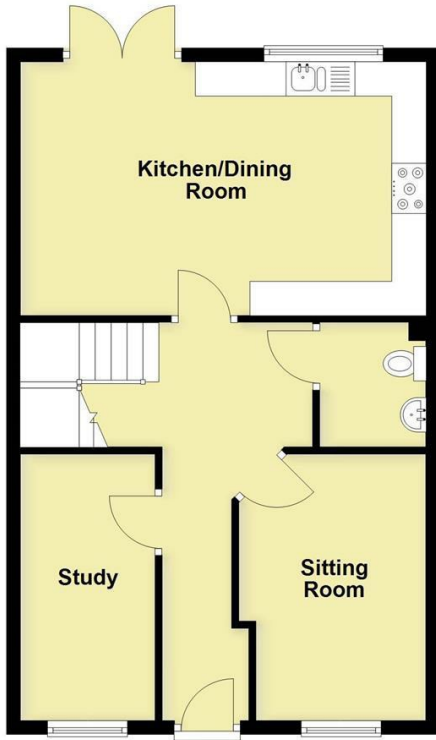


65 Highfield, Hatton Park, Warwick, CV35 7TQ



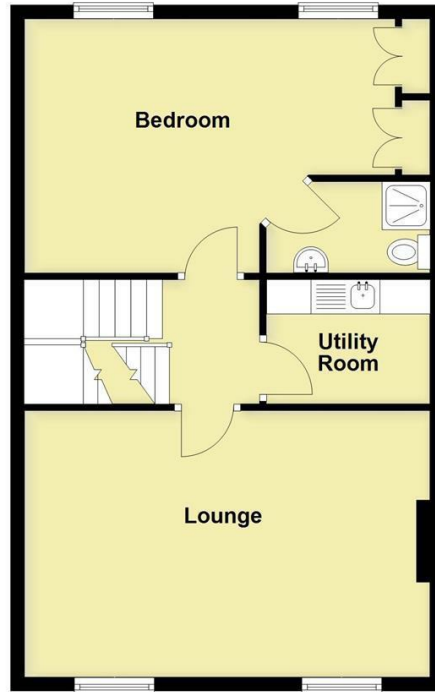
Ground Floor

Approx. 56.5 sq. metres (607.8 sq. feet)



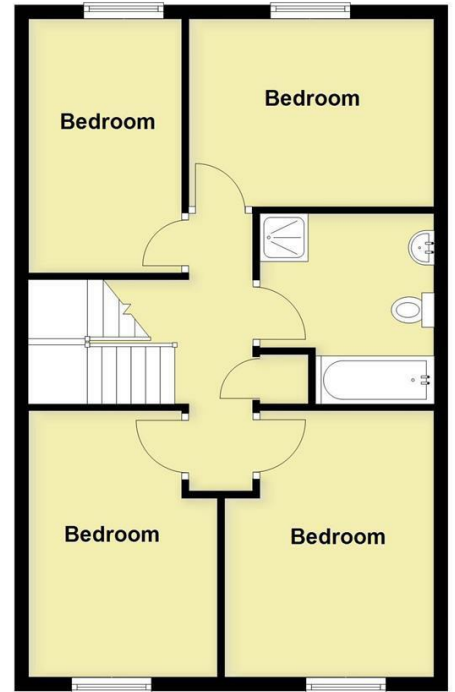
First Floor

Approx. 56.5 sq. metres (607.8 sq. feet)



Second Floor

Approx. 56.5 sq. metres (607.8 sq. feet)



Total area: approx. 169.4 sq. metres (1823.3 sq. feet)

This plan is for illustration purposes only and should not be relied upon as a statement of fact

The total area does not include the Garage, Gump or the barn



Energy Efficiency Rating

	Current	Potential
Very energy efficient - lower running costs		
(92 plus) A		
(81-91) B		
(69-80) C	75	86
(55-68) D		
(39-54) E		
(21-38) F		
(1-20) G		
Not energy efficient - higher running costs		
England & Wales	EU Directive 2002/91/EC	

CONTACT

12 High Street
Warwick
Warwickshire
CV34 4AP

E: sales@margetts.co.uk

T: 01926 496262

www.margetts.co.uk

